

Welcome to KS4



Who is Who

Head of Year Mrs Williams
rwilliams@kingstoneacademy.co.uk

Pastoral Lead Mrs Roden
lroden@kingstoneacademy.co.uk

Form Tutors:

Mrs Hunt shunt@kingstoneacademy.co.uk

Miss Evans kevans@kingstoneacademy.co.uk

Mr Marrett jmarrett@kingstoneacademy.co.uk

Miss Ratchford eratchford@kingstoneacademy.co.uk

Mr Wheeler jwheeler@kingstoneacademy.co.uk

SEND

Mrs Sankey csankey@kingstoneacademy.co.uk

Expectations for KS4

- ✓ 100% attendance where possible
- ✓ Focus on learning
- ✓ Achieving the very best

No holidays to be booked in May 2024

May to July 2024

Exams will be taking place.

How the new grades compare with old ones

Old grades	New grades
A*	9
A	8
B	7
C	6
	5 Strong Pass
	4 Standard Pass
D	3
E	2
F	1
G	1
U	U

English

Year 10 examinations 2024 English Literature EDEXCEL

Students in Year 10 will be taking their English Literature exams this academic year. Please use the information below to ensure you are familiar with the dates and contents of the exams.

Key Dates:

- **Monday 13th May 2024 9am - Paper 1: Macbeth and An Inspector Calls (1hour 45 minutes + extra time)**
- **Monday 20th May 2024 9am – Paper 2: A Christmas Carol and Poetry (2 hours 15 minutes + extra time)**



Structure of study: Please note this overview is what we expect to cover when, but will be adapted to meet the needs of students as the year progresses.

Autumn term 1 – September – October half term – An Inspector Calls

Autumn term 2 – November – Christmas – A Christmas Carol

January Mock exam in hall – A Christmas Carol and An Inspector Calls

Spring term 1 – January – February half term – Poetry Conflict and Unseen

Spring term 2 – March – Easter – Revision of Macbeth

Easter Mock exam – Macbeth and Poetry

Summer term 1 – Easter – May exams – Final revision

Summer term 2 – Spoken Language endorsement for GCSE Language in Year

Maths

Maths @ KHS



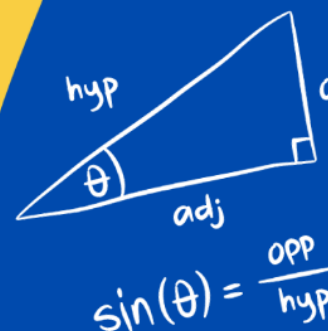
$$M = \left(\frac{x_1 + x_2}{2}, \frac{y_1 + y_2}{2} \right)$$

Exam Board
EDUQAS.co.uk

Assessment Papers
1x Non Calculator (2hr 15mins)
1x Calculator (2hr 15mins)

GCSE After-school Revision
Starting after half-term

Homework
Weekly on MathsWatch



Useful Sites

vle.mathswatch.co.uk/vle

corbettmaths.com

piximaths.co.uk

thegcsemathstutor.co.uk

mathsgenie.co.uk



$$V = s^3$$

Science



Combined Science & Triple Science

2 Biology exams

2 Chemistry exams

2 Physics exams

Combined Science exams = 1hr 10mins each

Triple Science exams = 1hr 45mins each

Educake is used for homework which is set weekly 20mins per subject per week.

Revision guides are available to purchase through the school

GCSE Art and Design Overview

GCSE is split into 2 components:

The Portfolio 60% (Year 10 and 1st term year 11)

2 Projects

Project 1 Fantastic and Strange

Teacher led and focuses on developing a wide range of different skills and techniques.

Project 2: Mock ESA

Chosen by the student and focuses on their strengths artists.

The Externally Set Assignment (ESA) 40% (Spring and Summer Term year 11)

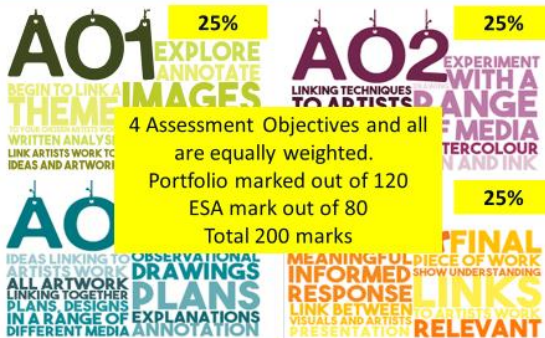
1 Project set by the exam board.

Preparatory period of sketchbook work.

10 hour-controlled time to create final pieces.

GCSE Art and Design Overview

How are they assessed?



GCSE Art and Design Overview

Expectations

All sketchbooks are the student's responsibility to bring to every lesson.

KS4 Art Club is every Tuesday 3.20pm to 4.20pm, this is an opportunity to catch up on missing work, develop work and complete homework.

Homework is set weekly.

GCSE Art and Design Overview

All students have been given a GCSE Art and Design learning journey and it is stuck inside their sketchbook.

All work counts towards submission for both units. Sketchbooks and final pieces.



Languages

French & Spanish Year 10 have been given a course break down so they have an idea of how the course works.



Homework is set once a week and students are expected to speak to us in between lessons if there are issues or they need additional support.

Core PE

All students can now wear WHITE socks if they wish.

However, if they are on Football or Rugby, they MUST wear their blue knee length socks.

If wearing trousers, socks should not be white, (same as normal uniform policy). If wearing leggings, they can be navy or white as per last year.

Layers can be worn, but top layers must be KHS kit.

If missing items, students must have a note or there will be a sanction depending on how many times they've forgotten items.

No coats to be worn - we are working on this, but no coats.



GCSE PE

It is strongly advised that students represent school teams and attend training to help boost the 40% of their grade that they can control.

Revision guides, flash cards and work books are on sale and should be appearing on ParentPay.

Sport Science

Students will have their first controlled assessment around May, all work between now and then is building up to this assessment.



Childcare



Students will have their first controlled assessment around March, all work between now and then is building up to this assessment.

Component 1 Performing 30%

Teacher assessed

A minimum of two pieces, lasting a total of 4-6 minutes, recorded in the year of assessment:
One piece must be an ensemble (group piece) lasting at least one minute
One piece linked to an Area of Study (see below)
Grade 3 music is the standard level and can score full marks if played perfectly
You can use any instrument or voice, or choose a technology option.

Component 2 Composing 30%

Teacher assessed

Two pieces:
One in response to a brief set by WJEC – there are 4 to choose from each year.
One free composition – ANY style you want to write in.

Component 3 Appraising 40%

Externally assessed examination

Listening examination:
8 questions, 2 on each area of study:
AoS 1 Musical Forms and Devices (including a set work*)
AoS 2 Music for Ensemble
AoS 3 Film Music
AoS 4 Popular Music (including a set work*)



GCSE
Music

RE GCSE Topics

Y10 (Religion)



Component 3: A Study of a World Faith: JUDAISM

This Component allows an exploration of the world faith of Judaism. You will study the beliefs, teachings and practices of Judaism and the impact they have on the lives of Jewish people.

Component 2: A Study of Christianity



This Component provides you with the opportunity to undertake an in-depth study of Christianity as a world religion. You will look at Christian beliefs, teachings and practices and the impact they have on communities and individual believers.

Y11 (Ethics)



Component 1: Religious & Ethical Studies in the Modern World

This Component provides you with the opportunity to study four Philosophical themes:

- Issues of Relationships
- Issues Life and Death
- Issues of Good and Evil
- Issues of Human Rights

These are studied from a Jewish and Christian perspective as well as your own opinions.

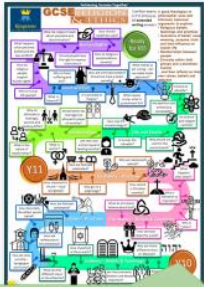


You will be given:

- PRINTED CLASS & REVISION NOTES
- An exercise book for notes
- An exercise book for assessment.

Bring these to class in your plastic folder.

RE GCSE Progress Checking



Unit	Topic	Progress
1	Issues of Relationships	✓
2	Issues of Life and Death	✓
3	Issues of Good and Evil	✓
4	Issues of Human Rights	✓
5	Issues of Relationships	✓
6	Issues of Life and Death	✓
7	Issues of Good and Evil	✓
8	Issues of Human Rights	✓
9	Issues of Relationships	✓
10	Issues of Life and Death	✓
11	Issues of Good and Evil	✓
12	Issues of Human Rights	✓

For each unit, you will have a lesson checklist – this shows you the specification and enables you to spot if you have missed any lessons and need to catch up

At the front of your book, you can see how far along the course you are with your learning journey

Exam Structure

The 4 question types are along the bottom of your sheet

The question demands increase:
A – 2 marks
B – 5 marks
C – 8 marks
D – 15 marks

3 exams – 4 hours.
Judaism 60 mins:
ABCD ABCD

Christianity 60 mins:
ABCD ABCD

Ethical Themes 120 mins:
ABCD ABCD
ABCD ABCD

You will be given a structure sheet and practice A LOT of exam style questions

A) Questions: DEFINE (2)	B) Questions: DESCRIBE (5)	C) Questions: EXPLAIN (8)	D) Questions: DISCUSS (15)
You will be given a definition of KEY CONCEPTS – LEARN THEM as you are given to answer the question. Definition plus example / expansion	Describe (DESCRIBE) in relation to the question. Answer the question (DESCRIBE) in relation to the question. 5 places of relevant INFO – can be BULLET POINTS focus on INFO	Explain (EXPLAIN) in relation to the question. Answer the question (EXPLAIN) in relation to the question. 2 paragraphs focus on INFO	Give supported arguments – show convincing the evidence into support or challenge the statement. Use evidence and knowledge. 4 paragraphs focus on INFO Giving different evidenced arguments

RE GCSE Expectations

You are here to learn and prepare for an exam you have chosen, Be:

- ✓ **READY TO LEARN** (Equipment, homework completed, focus in class)
- ✓ **RESPECTFUL** (follow instructions, listen to the speaker, accept others have diverse opinions)
- ✓ **SAFE** (arrive on time, be calm and mature in your GCSE class)

Catching Up

- You are responsible for catching up any missed lessons – all our learning is assessed in the exam.
- **Lessons are numbered** so you can easily see if one is missing and use Teams and handouts to complete it
- This can be done at home and if it is not done, then you will complete it at lunch times

Homework

Set on G4S - Homework is part of the learning – you will have homework each week which often includes:

- ✓ **SENECA ONLINE Classroom** – reading information, quizzes and exam questions. You will be given a class code to join
- ✓ **REVISION** Using your notes and the Revision guides provided – where it is clear you have not revised, you will resit assessments in an after school support session
- ✓ **PAST PAPER QUESTIONS** – Timed practice to bring to class for marking against a model answer

EDEXEL History GCSE Topics

Y9 and Y10 PERIOD STUDY (MODERN)



Superpower relations and the Cold War, 1941-91

Y10 DEPTH STUDY

(MEDIEVAL AND MODERN)



Anglo-Saxon and Norman England, c1060-88.



Weimar and Nazi Germany, 1918-39



Y11 THEMATIC UNIT

Migrants in Britain, c800–present and Notting Hill, c1948–c1970*

This course is 100% exam based:

- **Paper 1 (30%)**
Thematic Study – Migrants in Britain. 1 hour and 15 minutes
- **Paper 2 (40%)**
Period Study – Superpower Relations
Depth Study – Anglo Saxon and Norman England
1 hour and 45 minutes
- **Paper 3 (30%)**
Modern Depth Study – Weimar and Nazi Germany
1 hour and 20 minutes

*Note: ALL papers demand **extended writing skills** – you will write several essays under timed conditions*

History GCSE Exam Structure

Section	Question	Mark	Time
Section 1: Superpower Relations and the Cold War, 1941-91	1. Multiple choice questions (10 marks)	10	15 minutes
Section 2: Anglo-Saxon and Norman England, c1060-88	2. Short answer questions (10 marks)	10	15 minutes
Section 3: Weimar and Nazi Germany, 1918-39	3. Extended writing questions (20 marks)	20	45 minutes
Section 4: Migrants in Britain, c800–present and Notting Hill, c1948–c1970*	4. Extended writing questions (20 marks)	20	45 minutes

There are 14 different question stems to learn – you have already become familiar with many of these in KS3
Marks range from 4 marks for brief descriptions to 20 marks for extended writing.
Papers 1 and 3 have **stimulus material** (sources and interpretations)

For each question, you will be supported with **structure strips** and lots of practice.

History GCSE Progress Checking

Unit	Specification	Progress	Assessment
Unit 1: Superpower Relations and the Cold War, 1941-91	1.1. The Cold War 1.2. The Cold War 1.3. The Cold War	1.1. The Cold War 1.2. The Cold War 1.3. The Cold War	1.1. The Cold War 1.2. The Cold War 1.3. The Cold War
Unit 2: Anglo-Saxon and Norman England, c1060-88	2.1. Anglo-Saxon and Norman England 2.2. Anglo-Saxon and Norman England 2.3. Anglo-Saxon and Norman England	2.1. Anglo-Saxon and Norman England 2.2. Anglo-Saxon and Norman England 2.3. Anglo-Saxon and Norman England	2.1. Anglo-Saxon and Norman England 2.2. Anglo-Saxon and Norman England 2.3. Anglo-Saxon and Norman England
Unit 3: Weimar and Nazi Germany, 1918-39	3.1. Weimar and Nazi Germany 3.2. Weimar and Nazi Germany 3.3. Weimar and Nazi Germany	3.1. Weimar and Nazi Germany 3.2. Weimar and Nazi Germany 3.3. Weimar and Nazi Germany	3.1. Weimar and Nazi Germany 3.2. Weimar and Nazi Germany 3.3. Weimar and Nazi Germany
Unit 4: Migrants in Britain, c800–present and Notting Hill, c1948–c1970*	4.1. Migrants in Britain 4.2. Migrants in Britain 4.3. Migrants in Britain	4.1. Migrants in Britain 4.2. Migrants in Britain 4.3. Migrants in Britain	4.1. Migrants in Britain 4.2. Migrants in Britain 4.3. Migrants in Britain

For each unit, you will have a **lesson checklist** – this shows you the **specification** and enables you to spot if you have missed any lessons and need to catch up

Class and Revision Materials

Revision Guides will be available on Parentpay at £12 for all 4 units you need. Further revision is available on Seneca and BBC Bitesize

You will be given:

- An exercise book for **notes**
- An exercise book for **assessment**.

Bring these to class in your plastic folder.

History GCSE Expectations

You are here to learn and prepare for an exam you have chosen, Be:

- ✓ **READY TO LEARN** (*Equipment, homework completed, focus in class*)
- ✓ **RESPECTFUL** (*follow instructions, listen to the speaker, accept others have diverse opinions*)
- ✓ **SAFE** (*arrive on time, be calm and mature in your GCSE class*)

Homework

Set on G4S - Homework is part of the learning – you will have homework each week which often includes:

- ✓ **SENECA ONLINE Classroom** – reading information, quizzes and exam questions. You will be given a class code to join
- ✓ **REVISION** Using your notes and the Revision guides provided – where it is clear you have not revised, you will resit assessments in an after school support session
- ✓ **PAST PAPER QUESTIONS** – Timed practice to bring to class for marking against a model answer

Catching Up

- You are responsible for **catching up** any missed lessons – all our learning is assessed in the exam.
- **Lessons are numbered** so you can easily see if one is missing and use **Teams** and **handouts** to complete it
- This can be done at home and if it is not done, then you will complete it at lunch times



SPHERE stands for **S**ocial, **P**ersonal, **H**ealth, **E**conomy, **R**elationships and the **E**nvironment.

SPHERE comprises:

- The statutory 'Relationships Education, Relationships and Sex Education and Health Education (England) Regulations', which is compulsory for all schools to deliver since September 2020.
- The Learning Opportunities identified by the PSHE Association in delivering the PSHE Curriculum.
- The Citizenship National Curriculum Requirements.
- Aspects of the KS4 Computing National Curriculum

The SPHERE curriculum continues in Key Stage 4, despite there being no external GCSE assessment. As in Key Stage 3, SPHERE is taught in form groups by the students' form tutor. They are taught in three 30 minutes lessons each week and are further supported by a weekly year group assembly with regular guest speakers and two or three 'drop down' days a year.

As with Key Stage 3, each of the modules are titled '... and Me' to highlight their importance and how they affect EACH student. This is because, as a school, we believe our SPHERE curriculum plays an important role in helping students develop these values as well as preparing them for life beyond Kingstone when they leave.

Part of the SPHERE time in Key Stage 4 is spent preparing for work experience and helping students to plan what they intend to do when they leave Kingstone. This includes developing CVs, having 'mock interviews' and also developing links with local colleges through visits and assemblies.

GCSE Geography

AQA Syllabus 8035

The GCSE Geography course follows the AQA Syllabus which requires students to study a broad range of both human and physical Geography, using case studies from both the UK as well as places around the world.

The work done in Year 9 Geography is part of the syllabus so it is very important students do not lose or throw out their books and work from last year.

In Year 10 and Year 11 we study the following topics:

Year 10	Year 11
Bristol – A Major UK city Bristol Fieldwork Extreme Weather – Tropical Storms & Climate Change Deindustrialisation in the UK Tectonic Activity (Earthquakes) Rio de Janeiro – A Major NEE City	River landscapes in the UK River Fieldwork (Grwyne Fawr) Resource Management (Water, Food & Energy) Coastal Landscapes in the UK Geographical Issue & Revision

Homework is set on a regular basis and logged on Go4Schools. This often takes the form of learning keywords, revising or answering practise GCSE questions from past papers.

These are done in the small green assessment books which are then marked and feedback DIRT provided.

Students sit 3 exams at the end of year 11:

- Paper 1 = Living with the Physical Environment – 90 minutes (35%)
- Paper 2 = Challenges in the Human Environment – 90 minutes (35%)
- Paper 3 = Geographical Applications (Fieldwork & Issues Evaluation) – 90 minutes (30%)

Students undertake 2 fieldwork opportunities in Key Stage 4, In Year 10 there is a trip to Bristol to see the redevelopment around the Harbourside area and then a visit to 2 residential areas to do a comparative study. Details of the Bristol trip will be out shortly. Then in Year 11, students carry out a river study. The work done on these fieldtrips are then assessed in Paper 3 of the final exams.

Careers Support

Work experience will be the week commencing Monday 8th July

Three Colleges Taster Day will be Tuesday 2nd July

University of Worcester for a Yr 10 January visit

Our Careers Evening is expected to be on Thursday 25th January: 6-8pm for years 9-11 inc.

WEDS 5th Feb is the Skills Show at the Racecourse. (TBC)

USEFUL CAREERS WEBSITES TO USE

You can use the following websites to give you chance to research possible careers and explore ideas about your next step. It may give you ideas about which subjects to take, as different careers sometimes need specific qualifications. For some jobs you need to go to university, for others it's an option. You can also find out about apprenticeships/degree apprenticeships.

www.eclips-online.co.uk This has good, detailed job information sheets on it. The password is: **Kingstone-3** This is free to access in school, or at home. Start by using Job Groups and the A-Z. You could also try 'Career Wizard' to give you some ideas.

www.gov.uk/apply-apprenticeship Use this to look for apprenticeship vacancies – both locally and nationwide. Be careful of closing dates. You apply on line and will need to login and create a password/account.

www.icould.com This is a really good site for seeing things as they really are. You can watch a 5 minute video of people working in a particular industry and find out how they got their job, and the training required. There is also some detailed LMI (Labour Market Information) available, which tells you where jobs are available geographically, and what you would earn.

Try the BUZZ QUIZ for ideas!

www.ucas.com The main university application site, but also useful for viewing the range of degrees available and their 'entry requirements'. Information on Degree apprenticeships is also included.

www.informedchoices.ac.uk Guidance on A level choices and universities

www.stepintothenhhs.nhs.uk Find out more about careers in the NHS

<https://nationalcareers.service.gov.uk/> For ages 13 and over

Work Experience

Work experience is week commencing Monday 8th July

If you are arranging your own work experience

Name of employer / company

Address

Contact person name

Any one providing work experience MUST have employer's liability insurance.

Deadline 1st December



Forms will be issued to students in the coming weeks for those who are arranging their own work experience.

Parents are responsible for transport to and from work experience

Revision Techniques

Reading

Cue cards

Mnemonics

Acting

Singing

Post-it notes

Flash cards

Past papers

Anything that works!

DO

- ✓ Discuss revision with your child and decide together what your role could be.
- ✓ Be available and supportive when you are asked for help. If you can't help immediately then suggest a convenient time.
- ✓ Give plenty of praise and encouragement.
- ✓ Be willing to discuss problems. Everything becomes more emotional during this revision and examination process.
- ✓ Keep them well supplied with food & drink.
- ✓ Try to stay calm yourself and don't expect too much.
- ✓ Encourage them to take regular breaks if they have been revising for a long time.
- ✓ Encourage morning revision when the brain is more receptive.
- ✓ Discourage studying right up to bed time.
- ✓ Consider where in the house studying can take place effectively.
- ✓ Come to Parents evening on November 30th 2023 & 24th April 2024

DON'T

- ✗ Make comparisons with brothers, sisters or their friends.
- ✗ Unintentionally add to their anxieties by constantly referring to revision and exams.
- ✗ Expect them to study ALL the time. Taking some time out to relax has a positive effect on their work.
- ✗ Make a battleground out of whether they listen to music or not when doing their revision.
- ✗ Distract them unnecessarily.
- ✗ Worry if their revision techniques seem unusual or strange.
- ✗ Relate too much to your own experiences of revision and exams.
- ✗ Discourage studying with friends.

